

**Lesson 136 1 of 5**

Adding vertically to a sum of 10

Finding the number than makes 10 when added to the given number

$$\begin{array}{r} 3 \blacksquare \blacksquare \blacksquare \\ + 2 \blacksquare \blacksquare \\ \hline \end{array}$$

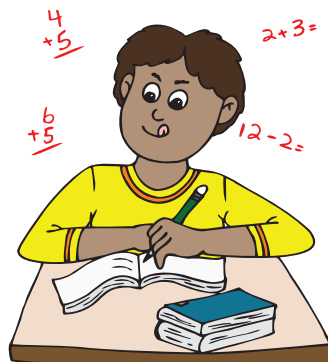
$$\begin{array}{r} 5 \blacksquare \blacksquare \blacksquare \blacksquare \blacksquare \\ + 5 \blacksquare \blacksquare \blacksquare \blacksquare \blacksquare \\ \hline \end{array}$$

$$\begin{array}{r} 1 \blacksquare \\ + 6 \blacksquare \blacksquare \blacksquare \blacksquare \blacksquare \blacksquare \\ \hline \end{array}$$

$$\begin{array}{r} 2 \blacksquare \blacksquare \\ + 2 \blacksquare \blacksquare \\ \hline \end{array}$$

$$\begin{array}{r} 2 \blacksquare \blacksquare \\ + 7 \blacksquare \blacksquare \blacksquare \blacksquare \blacksquare \blacksquare \blacksquare \\ \hline \end{array}$$

$$\begin{array}{r} 6 \blacksquare \blacksquare \blacksquare \blacksquare \blacksquare \blacksquare \blacksquare \\ + 4 \blacksquare \blacksquare \blacksquare \blacksquare \\ \hline \end{array}$$



$$\begin{array}{r} 3 \blacksquare \blacksquare \blacksquare \blacksquare \\ + 3 \blacksquare \blacksquare \blacksquare \blacksquare \\ \hline \end{array}$$

$$\begin{array}{r} 5 \blacksquare \blacksquare \blacksquare \blacksquare \blacksquare \\ + 3 \blacksquare \blacksquare \blacksquare \\ \hline \end{array}$$

$$\begin{array}{r} 5 \blacksquare \blacksquare \blacksquare \blacksquare \blacksquare \\ + 4 \blacksquare \blacksquare \blacksquare \blacksquare \\ \hline \end{array}$$

**Lesson 136 2 of 5**

Adding vertically to a sum of 10

Finding the number than makes 10 when added to the given number

$$\begin{array}{r} 3 \text{ ■■■} \\ + 2 \text{ ■■} \\ \hline 5 \end{array}$$

$$\begin{array}{r} 5 \text{ ■■■■■} \\ + 5 \text{ ■■■■■} \\ \hline 10 \end{array}$$

$$\begin{array}{r} 1 \text{ ■} \\ + 6 \text{ ■■■■■} \\ \hline 7 \end{array}$$

$$\begin{array}{r} 2 \text{ ■■} \\ + 2 \text{ ■■} \\ \hline 4 \end{array}$$

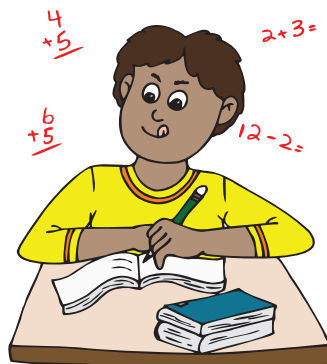
$$\begin{array}{r} 2 \text{ ■■} \\ + 7 \text{ ■■■■■■} \\ \hline 9 \end{array}$$

$$\begin{array}{r} 6 \text{ ■■■■■■} \\ + 4 \text{ ■■■■} \\ \hline 10 \end{array}$$

$$\begin{array}{r} 5 \text{ ■■■■■} \\ + 3 \text{ ■■■} \\ \hline 8 \end{array}$$

$$\begin{array}{r} 3 \text{ ■■■■} \\ + 3 \text{ ■■■■} \\ \hline 6 \end{array}$$

$$\begin{array}{r} 5 \text{ ■■■■■} \\ + 4 \text{ ■■■■} \\ \hline 9 \end{array}$$



**Lesson 136 3 of 5**

Adding vertically to a sum of 10

Finding the number than makes 10 when added to the given number

$$\begin{array}{r} 3 \blacksquare \blacksquare \blacksquare \\ + \\ \hline 5 \end{array}$$

$$\begin{array}{r} 1 \blacksquare \\ + \\ \hline 10 \end{array}$$

$$\begin{array}{r} 5 \blacksquare \blacksquare \blacksquare \blacksquare \blacksquare \\ + \\ \hline 10 \end{array}$$

$$\begin{array}{r} 4 \blacksquare \blacksquare \\ + \\ \hline 10 \end{array}$$

$$\begin{array}{r} 2 \blacksquare \blacksquare \\ + \\ \hline 10 \end{array}$$

$$\begin{array}{r} 6 \blacksquare \blacksquare \blacksquare \blacksquare \blacksquare \blacksquare \\ + \\ \hline 10 \end{array}$$



$$\begin{array}{r} 3 \blacksquare \blacksquare \blacksquare \\ + \\ \hline 10 \end{array}$$

$$\begin{array}{r} 5 \blacksquare \blacksquare \blacksquare \blacksquare \blacksquare \\ + \\ \hline 9 \end{array}$$

$$\begin{array}{r} 7 \blacksquare \blacksquare \blacksquare \blacksquare \blacksquare \blacksquare \blacksquare \\ + \\ \hline 10 \end{array}$$

**Lesson 136 4 of 5**

Adding vertically to a sum of 10

Finding the number than makes 10 when added to the given number

$$\begin{array}{r} 3 \text{ ■■■} \\ + 2 \text{ ■■} \\ \hline 5 \end{array}$$

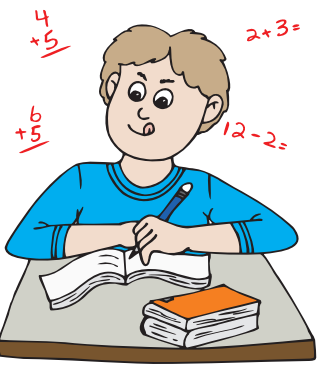
$$\begin{array}{r} 1 \text{ ■} \\ + 9 \text{ ■■■■■■■■■} \\ \hline 10 \end{array}$$

$$\begin{array}{r} 5 \text{ ■■■■■} \\ + 5 \text{ ■■■■■} \\ \hline 10 \end{array}$$

$$\begin{array}{r} 4 \text{ ■■} \\ + 6 \text{ ■■■■■■} \\ \hline 10 \end{array}$$

$$\begin{array}{r} 2 \text{ ■■} \\ + 8 \text{ ■■■■■■■■} \\ \hline 10 \end{array}$$

$$\begin{array}{r} 6 \text{ ■■■■■■} \\ + 4 \text{ ■■■■} \\ \hline 10 \end{array}$$



$$\begin{array}{r} 3 \text{ ■■■} \\ + 7 \text{ ■■■■■■} \\ \hline 10 \end{array}$$

$$\begin{array}{r} 5 \text{ ■■■■■} \\ + 4 \text{ ■■■■} \\ \hline 9 \end{array}$$

$$\begin{array}{r} 7 \text{ ■■■■■■} \\ + 3 \text{ ■■■} \\ \hline 10 \end{array}$$

Lesson 136 5 of 5

Adding vertically to a sum of 10

Finding the number than makes 10 when added to the given number

Trace the numerals.

